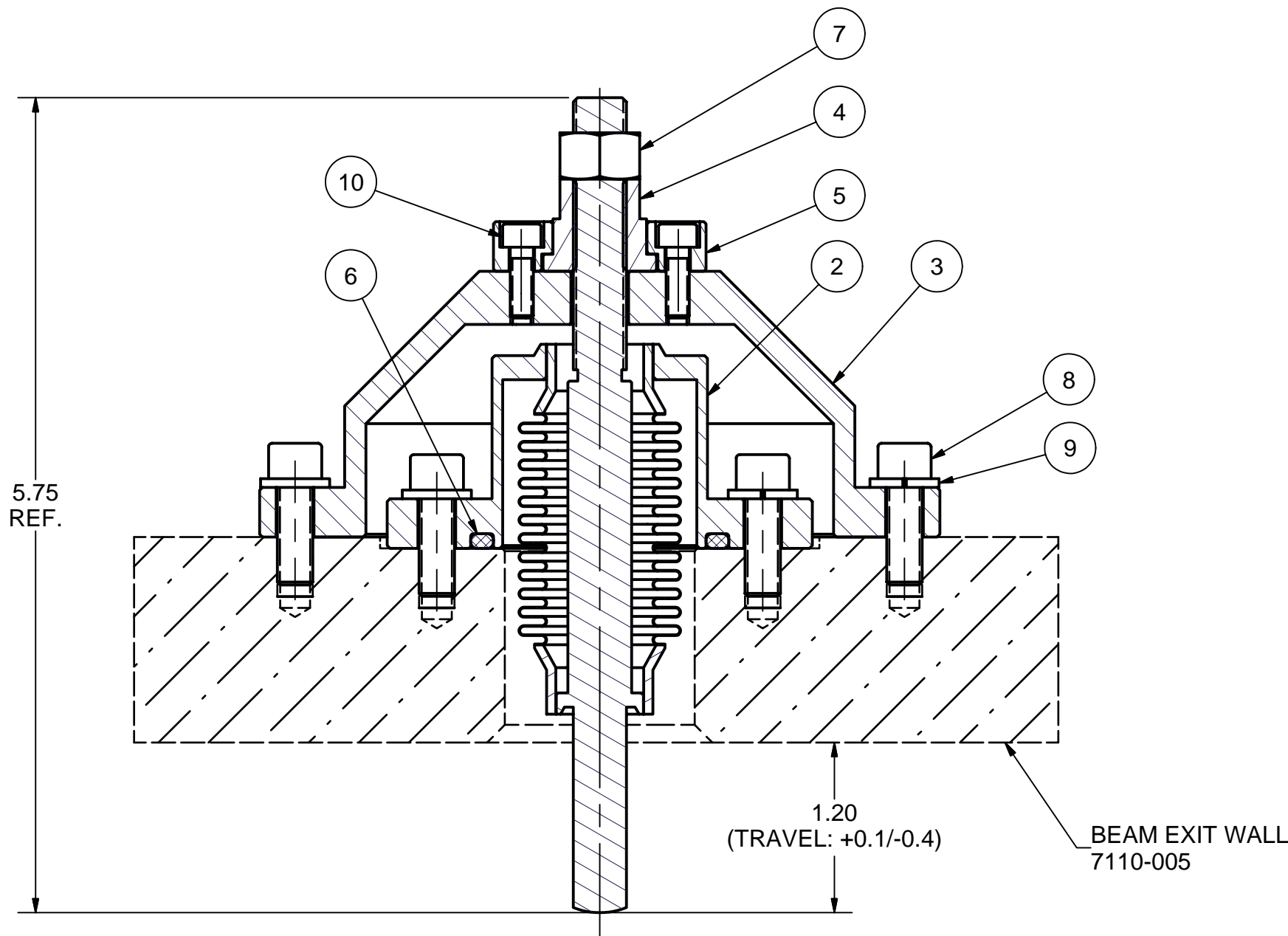
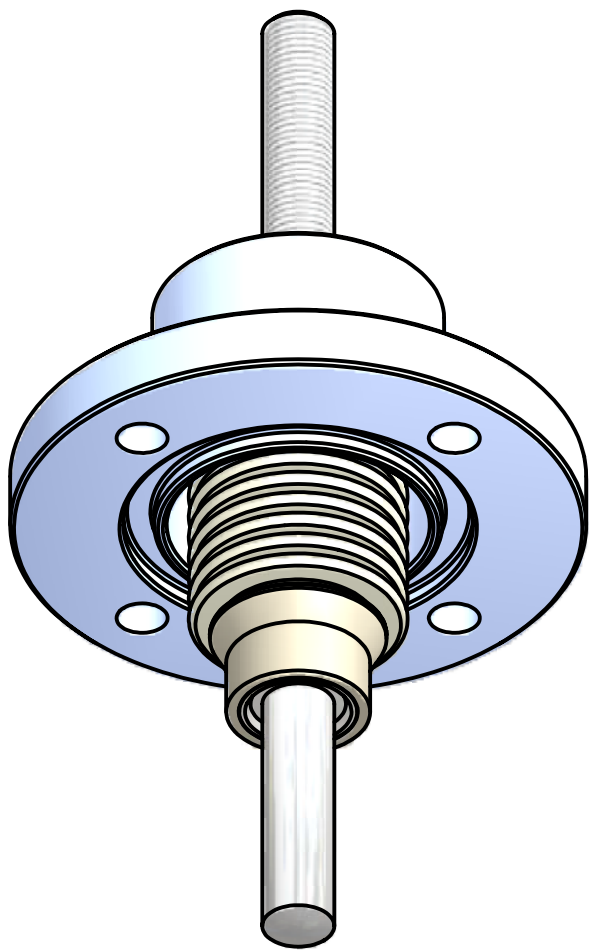
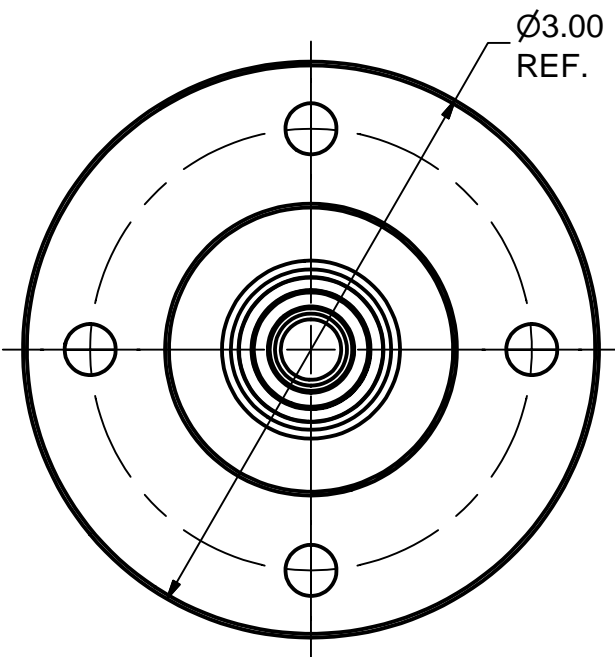
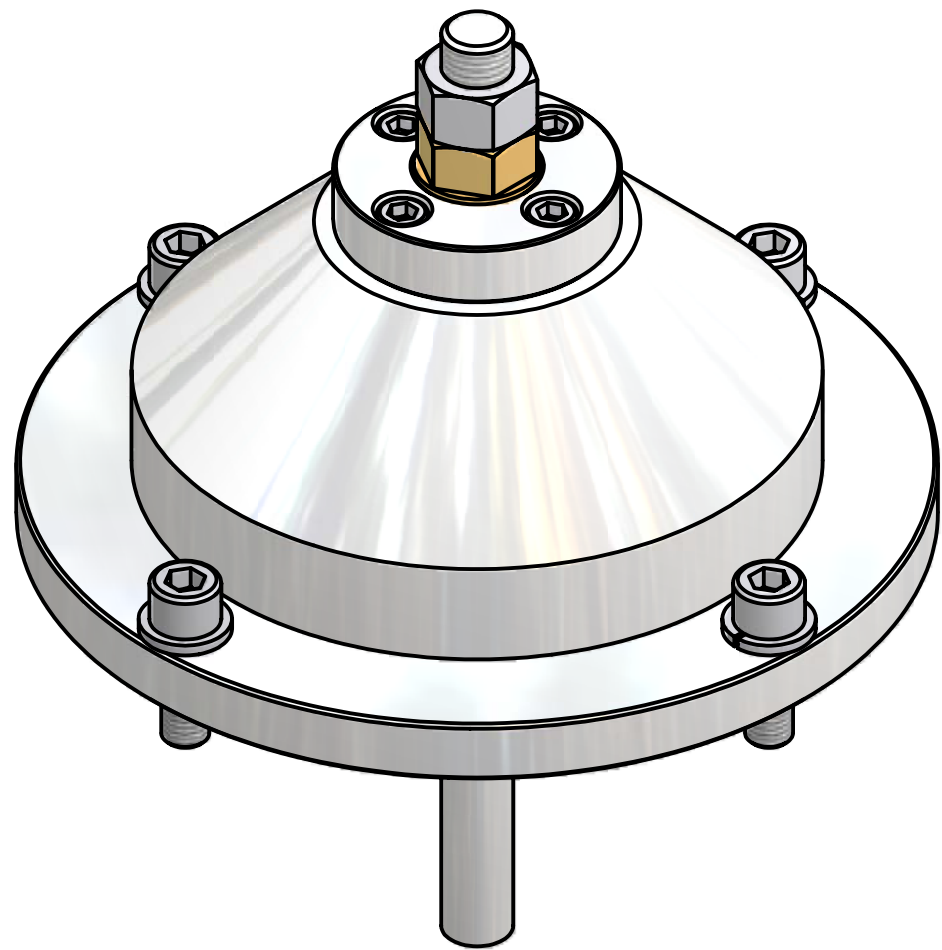
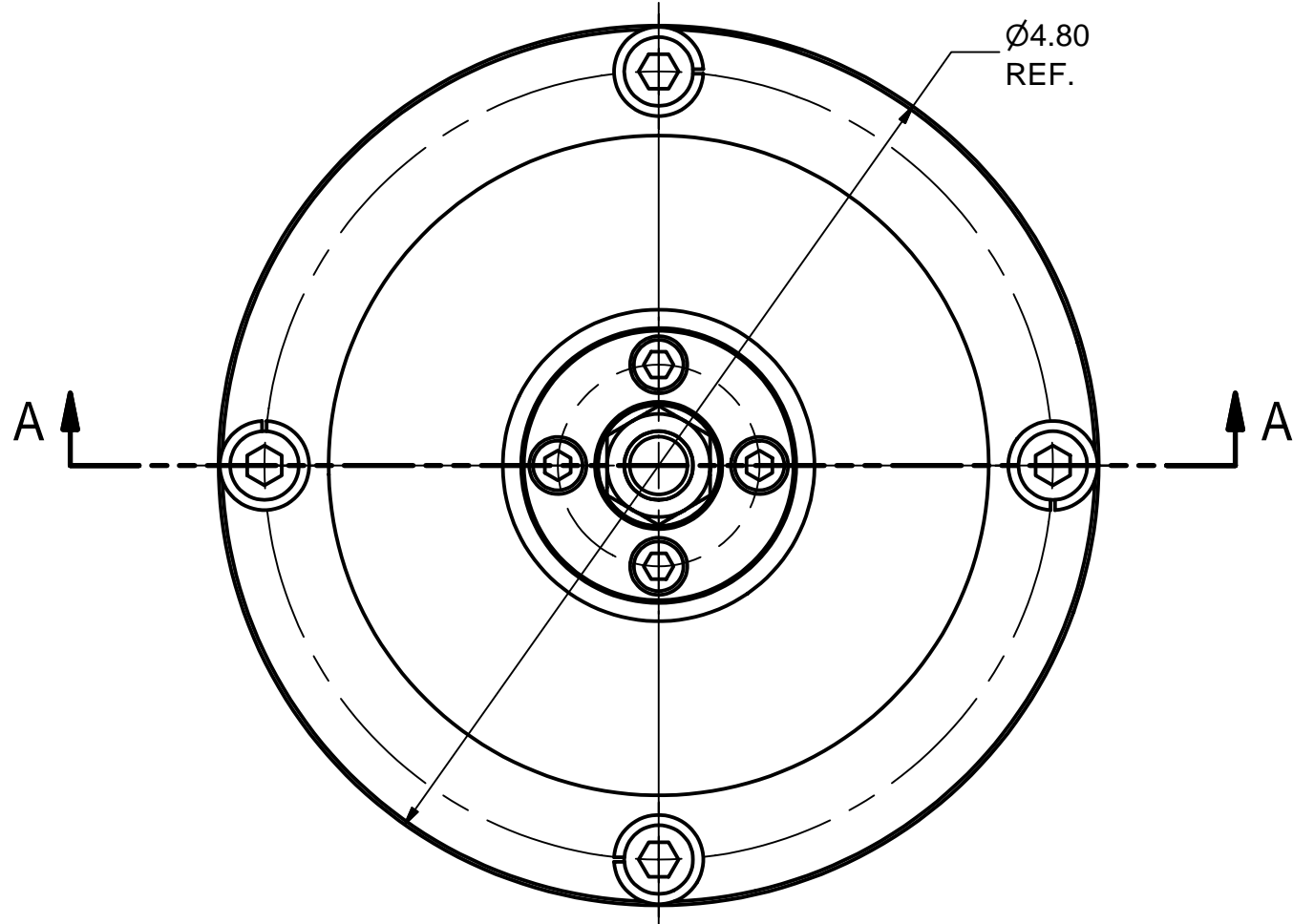
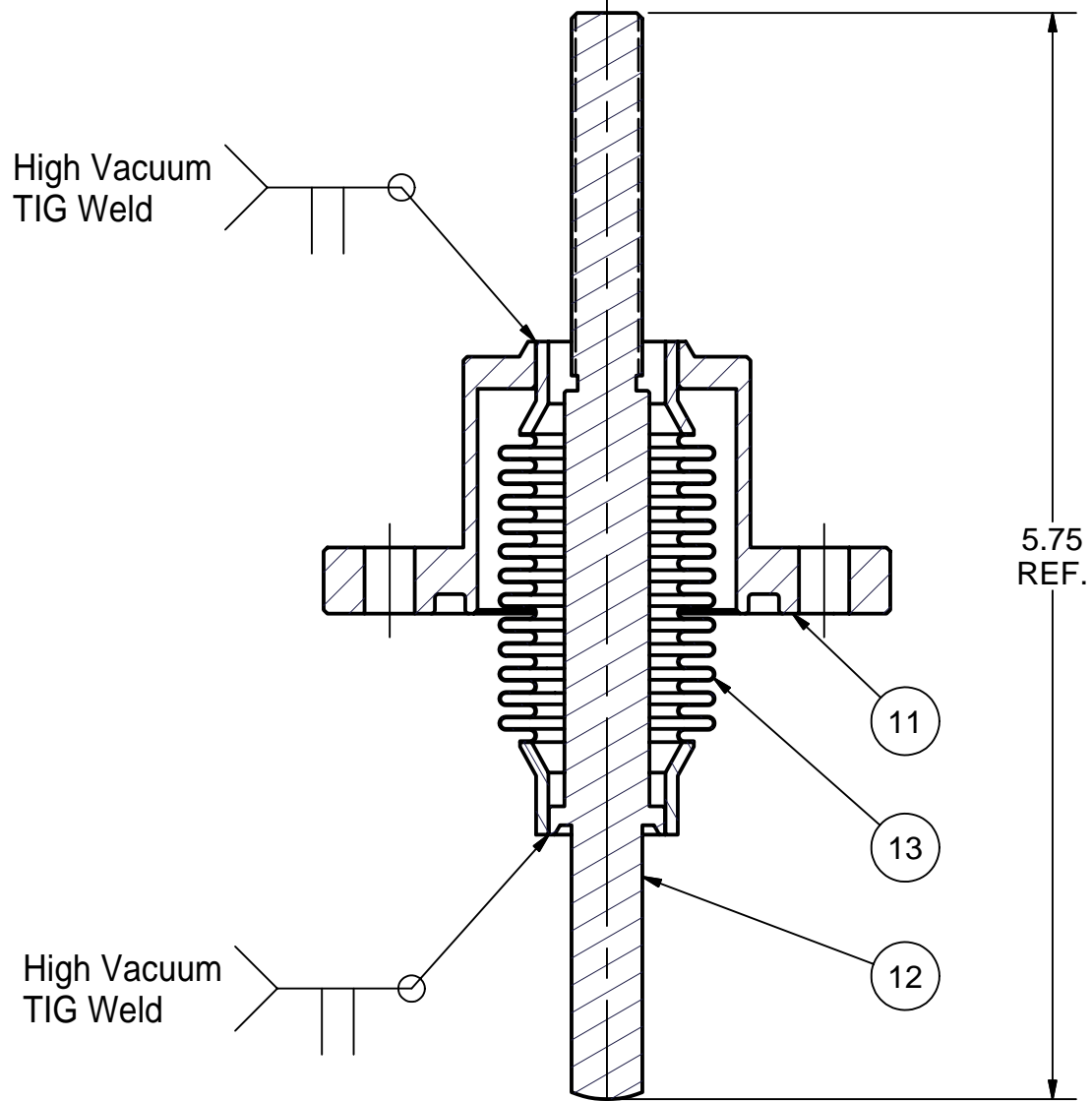


REVISIONS			
SYM.	ZONE	DESCRIPTION	DATE APP.



SECTION A-A

1 WPM WEIGHT LOCK UNIT ASSEMBLY
FILE NAME: 7110-031
SHEET NO.: 1
DFT. SCALE: 1:1
MATERIAL:
QTY: 1 PER CRYOMODULE
NOTES: 1. PROVIDE LEAK TEST. LEAK RATE: <2.0E-8 Torr*/sec.



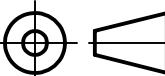

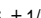


2 BELLOWS SUB-ASSEMBLY
FILE NAME: 7110-031
SHEET NO.: 1
DFT. SCALE: 1:1
MATERIAL:
QTY: 1 PER ASSEMBLY
NOTES:

Release of final PO version for Meyer Tool - June 19, 2007.

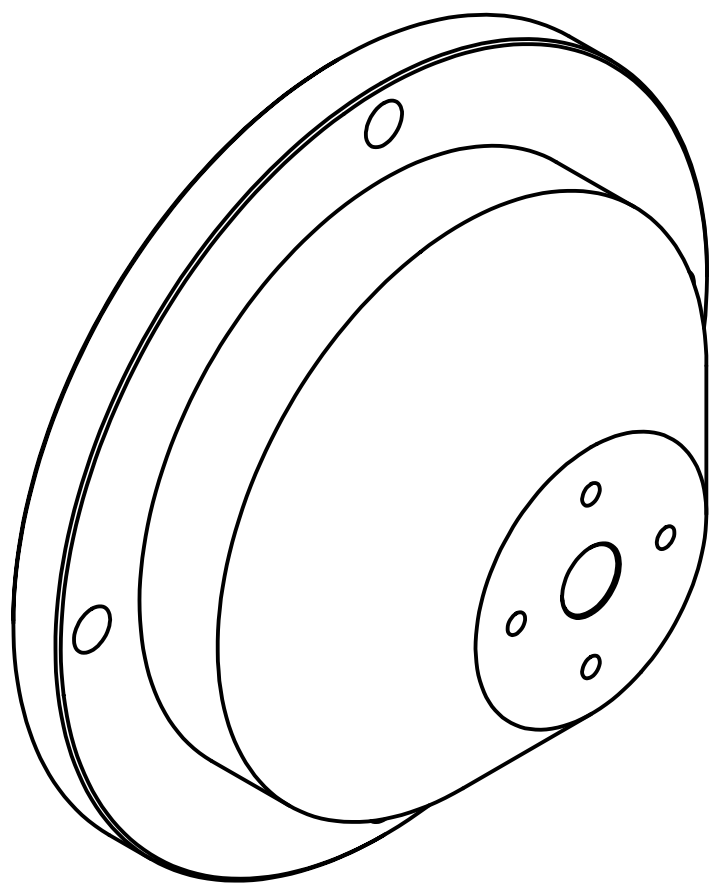
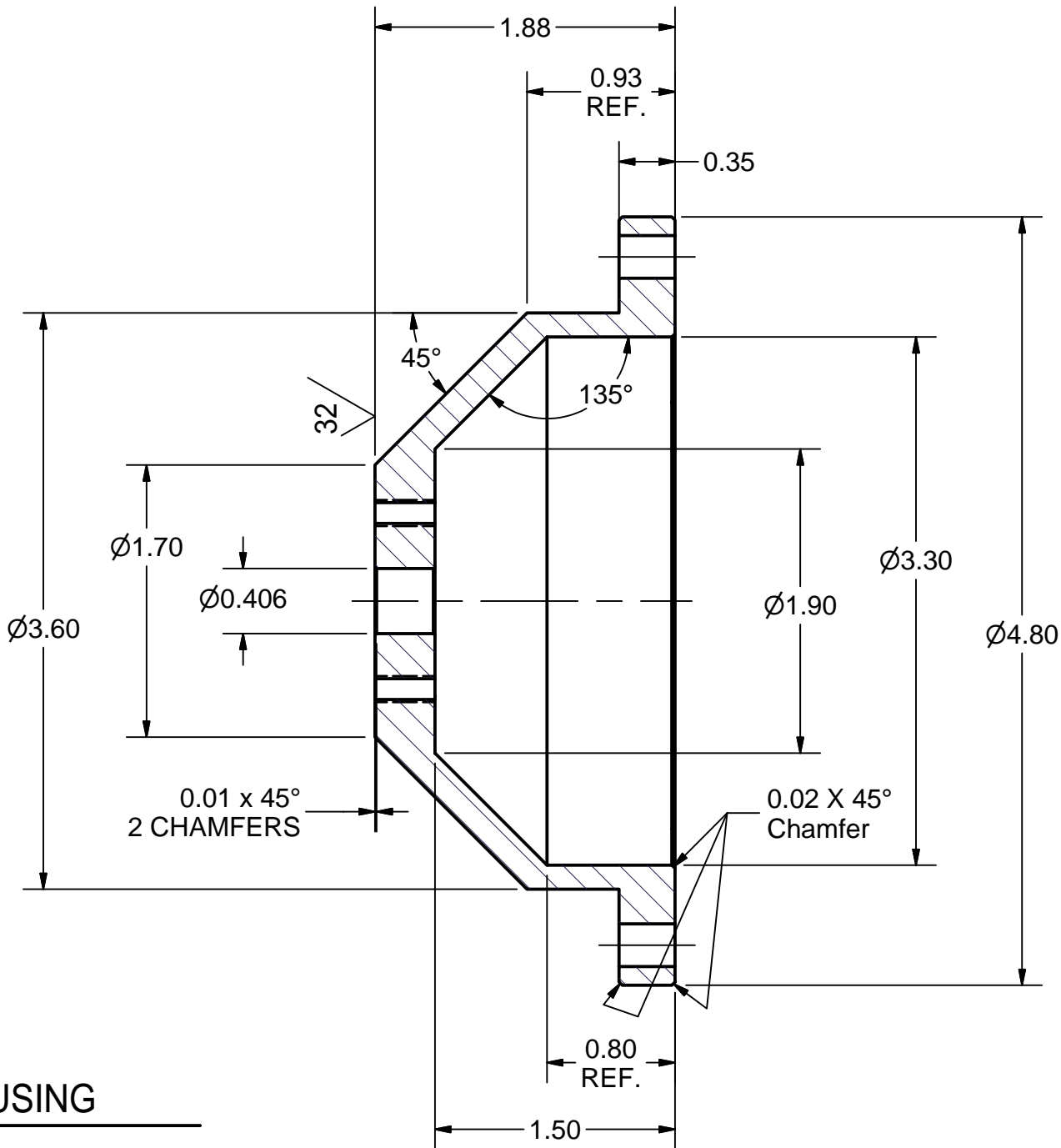
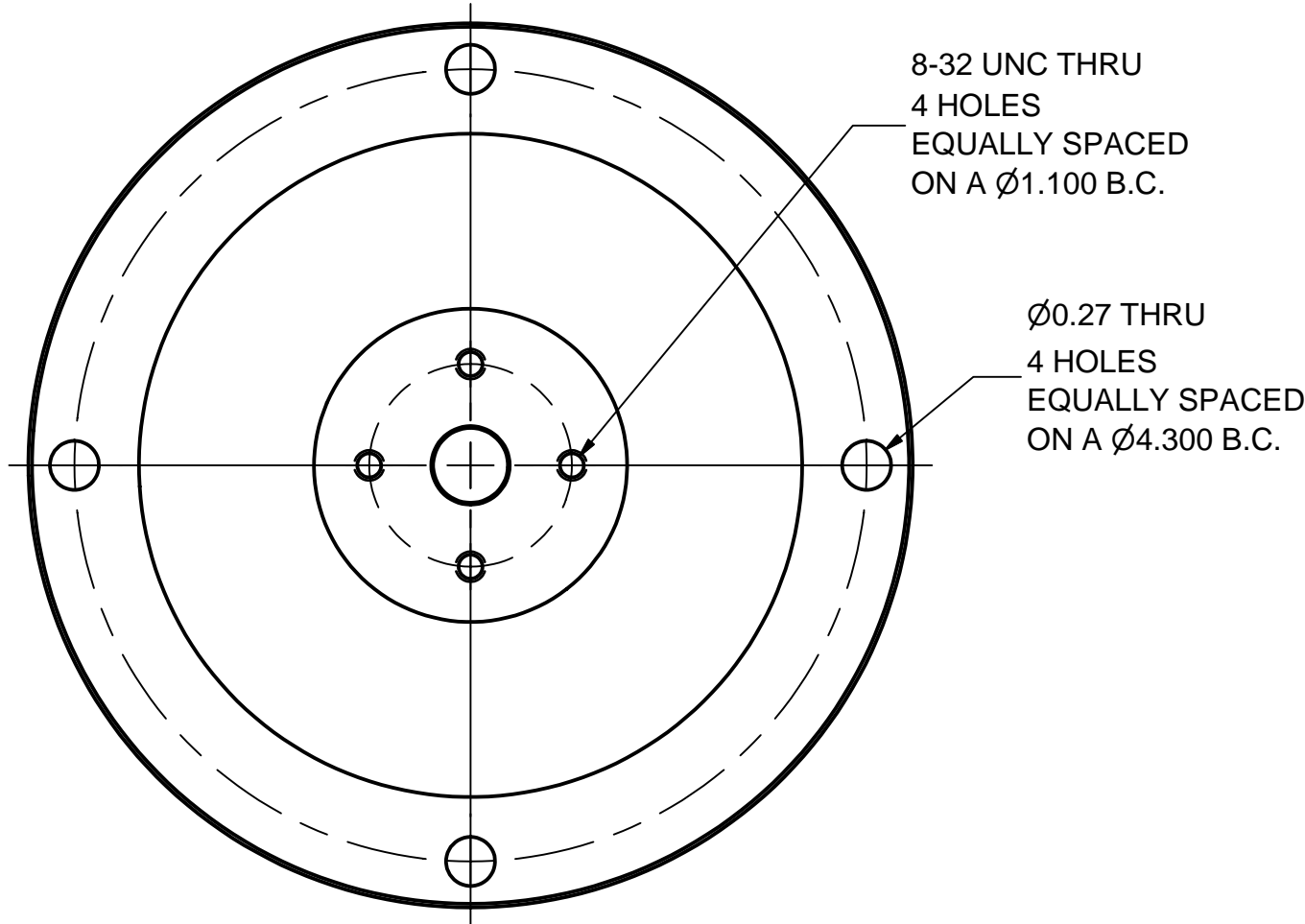
13	-	0.75 x 1.14 x 0.005 BELLOWS	1		304 St. Steel, MDC 470502	
12	Sheet 3	PUSH ROD	1			
11	Sheet 3	BELLOWS HOUSING	1			
10	-	#8-32 x 1/2 Socket Head Cap Screw	4		St. Steel	
9	-	1/4 Spring Lock Washer	8		St. Steel	
8	-	1/4-28 x 3/4 Socket Head Cap Screw	8		St. Steel	
7	-	3/8-24 Hex Nut	1		St. Steel	
6	-	1.5 ID x 1/8 W (#222) O-RING	1		Viton or EPDM	
5	Sheet 2	PUSH NUT FLANGE	1			
4	Sheet 2	PUSH NUT	1			
3	Sheet 2	LOCK UNIT HOUSING	1			
2	Sheet 1	BELLOWS SUB-ASSEMBLY	1	X		
1	Sheet 1	WPM WEIGHT LOCK UNIT ASSEMBLY	X			

FOR MACHINING LUBRICANT USE ONLY
ALKALINE DETERGENT LUBRICANT CIMSTAR 40
OR EQUIVALENT APPROVED BY CORNELL LEPP

TECHNICAL RESOURCE APPROVALS REQUIRED BEFORE FABRICATION			
	OK	DATE	N/A
DRAFTING (O'Connell):			
MACHINE SHOP (Kaminski):			
CHEMISTRY (Conklin):			
ELECTRONICS SHOP (Barley):			
FURNACE BRAZING (Sherwood):			
BEAM WELDING (Sears):			
WELDING OTHER (Gallagher):			
UTILITIES INTEGRATION (Gallagher):			
STOCKROOMS (Lockwood):			

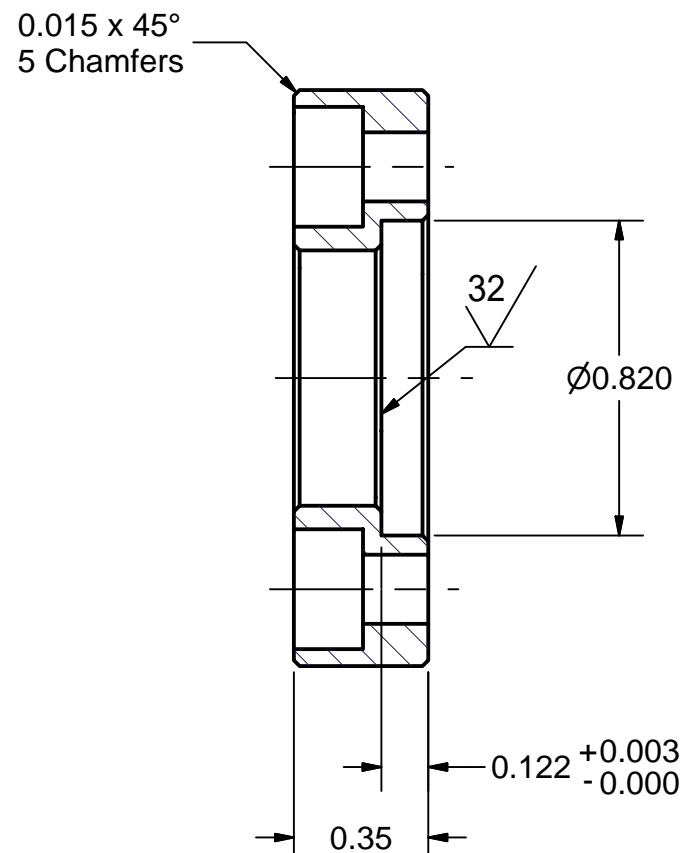
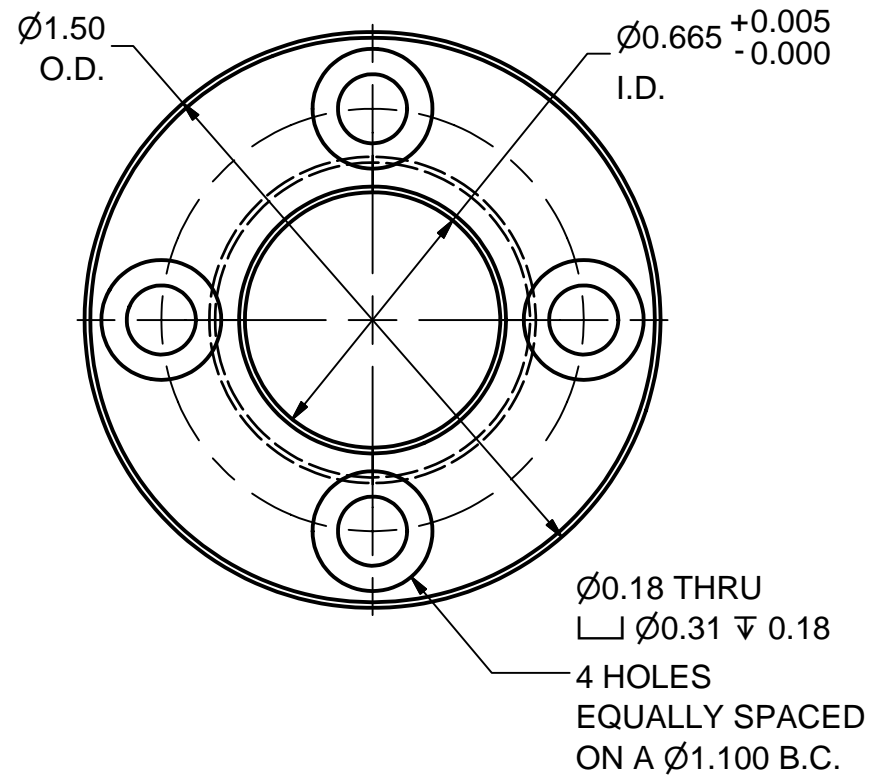
	ITEM	DWG. NO.	DESCRIPTION			G1	G2	G3	REMARKS	REV.
							QUANTITY			
	PRINT DISTR.	PLOT DATE: 6/19/2007 CAD FILE NAME: 7110-031.idw								
	SH. NO. 1 OF 3 7110-031	CR-1	UNLESS OTHERWISE SPECIFIED: DIMENSIONS ARE IN INCHES; TOLERANCES ON: .0 ± .02 .00 ± .010 .000 ± .005 FRACTIONS ± 1/32 ANGLES ± 0.5° ALL SURFACES 		<div>CORNELL UNIVERSITY  LEPP</div> <div>LABORATORY FOR ELEMENTARY-PARTICLE PHYSICS</div> <div>CORNELL UNIVERSITY Floyd R. Newman Laboratory Ithaca, NY 14853</div> <div>ERL HORIZONTAL TEST CRYOMODULE WPM WEIGHT LOCK UNIT</div>					
CHECKED BY: VM		DRAWN BY	DRAWN FOR	DATE	SCALE		7110-031	REV.		
APPROVED BY: ML		sx29	M.Liepe	6/27/2006					SH. NO. 1 OF 3	

REVISIONS			
SYM.	ZONE	DESCRIPTION	DATE APP.



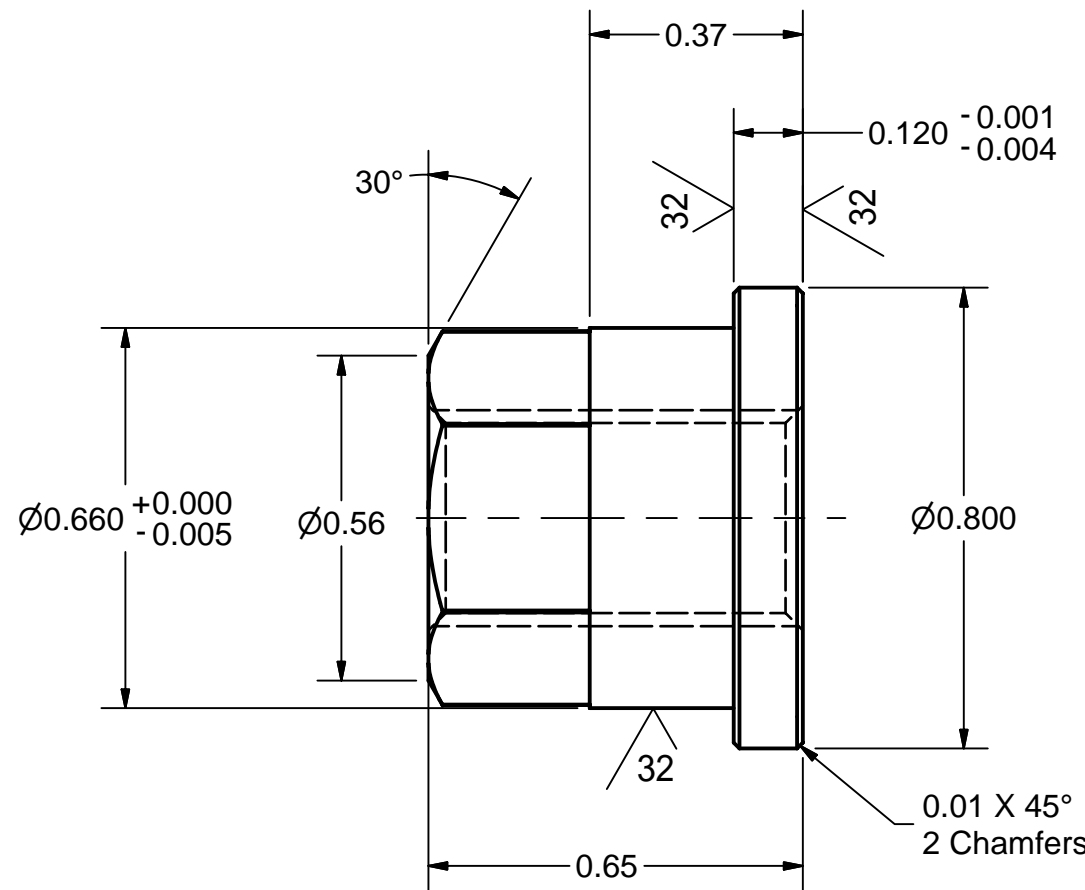
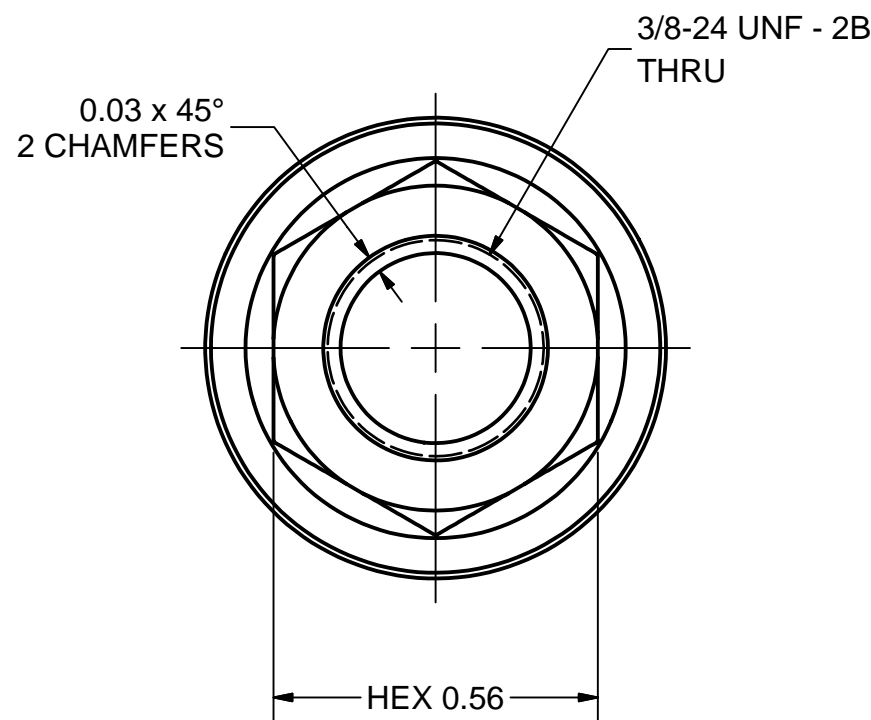
3 LOCK UNIT HOUSING

FILE NAME: 7110-031
SHEET NO.: 2
DFT. SCALE: 1:1
MATERIAL: 304L Stainless Steel
QTY: 1 PER ASSEMBLY
NOTES:



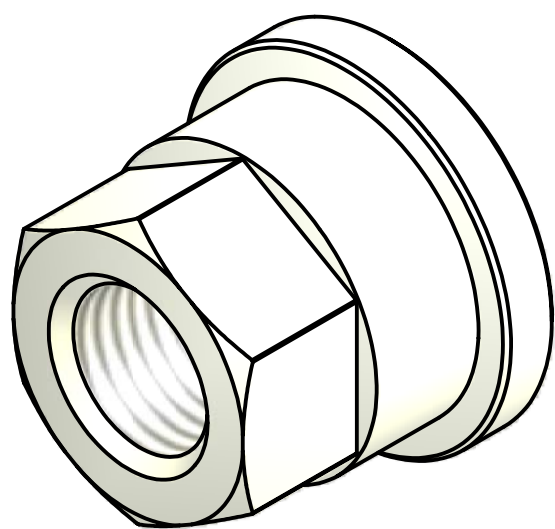
5 PUSH NUT FLANGE

FILE NAME: 7110-031
SHEET NO.: 2
DFT. SCALE: 2:1
MATERIAL: 304L Stainless Steel
QTY: 1 PER ASSEMBLY
NOTES:



4 PUSH NUT


FILE NAME: 7110-031
SHEET NO.: 2
DFT. SCALE: 3:1
MATERIAL: Silicon Bronze
QTY: 1 PER ASSEMBLY
NOTES:



Release of final PO version for Meyer Tool - June 19, 2007.

FOR MACHINING LUBRICANT USE ONLY
ALKALINE DETERGENT LUBRICANT CIMSTAR 40
OR EQUIVALENT APPROVED BY CORNELL LEPP

TECHNICAL RESOURCE APPROVALS REQUIRED BEFORE FABRICATION			
	OK	DATE	N/A
DRAFTING (O'Connell):			
MACHINE SHOP (Kaminski):			
CHEMISTRY (Conklin):			
ELECTRONICS SHOP (Barley):			
FURNACE BRAZING (Sherwood):			
BEAM WELDING (Sears):			
WELDING OTHER (Gallagher):			
UTILITIES INTEGRATION (Gallagher):			
STOCKROOMS (Lockwood):			

		ITEM	DWG. NO.	DESCRIPTION			G1	G2	G3	REMARKS		REV.
								QUANTITY				
D	PRINT DISTR.	PLOT DATE: 6/19/2007 CAD FILE NAME: 7110-031.idw										
7110-031 SH. NO. 2 OF 3	CR-1	UNLESS OTHERWISE SPECIFIED: DIMENSIONS ARE IN INCHES: TOLERANCES ON: .0 ± .02 .00 ± .010 .000 ± .005 FRACTIONS ± 1/32 ANGLES ± 0.5° ALL SURFACES		<div><div>CORNELL UNIVERSITY Floyd R. Newman Laboratory Ithaca, NY 14853</div></div> <div>ERL HORIZONTAL TEST CRYOMODULE WPM WEIGHT LOCK UNIT</div>								
		CHECKED BY: VM APPROVED BY: ML		DRAWN BY sx29	DRAWN FOR M.Liepe	DATE 6/27/2006	SCALE	D	7110-031 SH. NO. 2 OF 3		REV.	

